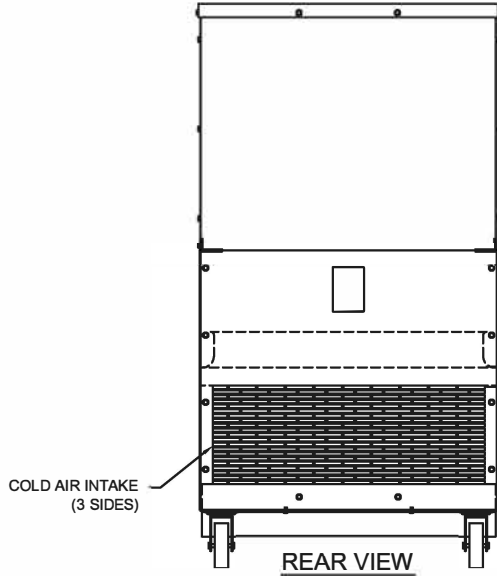
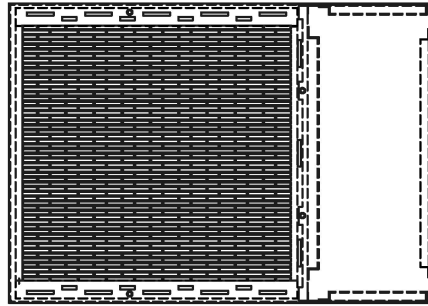
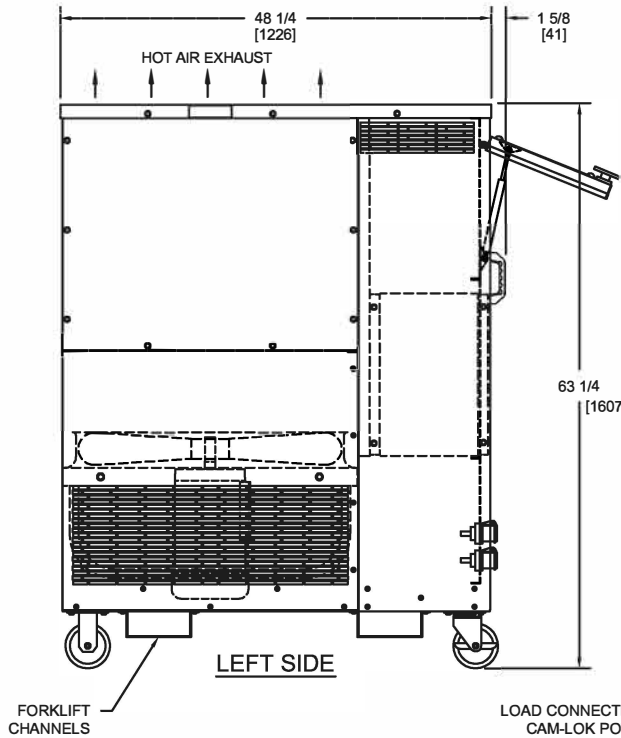


TOP VIEW
(HOT AIR EXHAUST)



COLD AIR INTAKE
(3 SIDES)

REAR VIEW



48 1/4
[1226]

HOT AIR EXHAUST

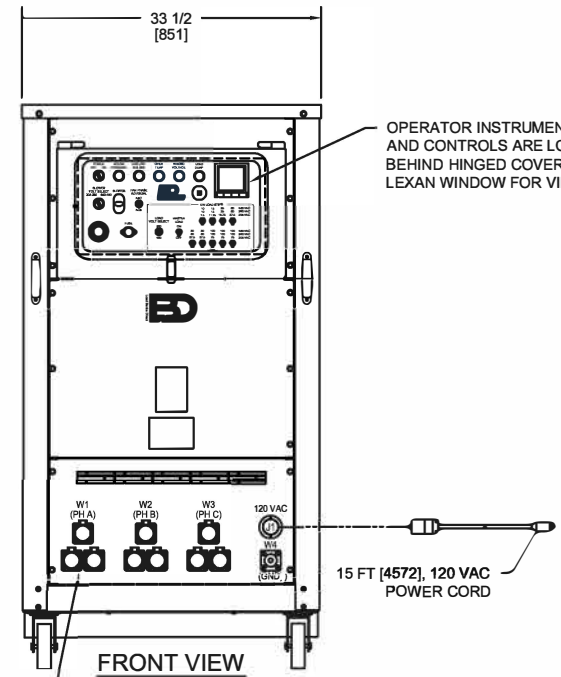
1 5/8
[41]

63 1/4
[1607]

FORKLIFT
CHANNELS

LEFT SIDE

LOAD CONNECTIONS
CAM-LOK POWER
CONNECTORS



33 1/2
[851]

OPERATOR INSTRUMENTATION
AND CONTROLS ARE LOCATED
BEHIND HINGED COVER WITH
LEXAN WINDOW FOR VIEWING

15 FT [4572], 120 VAC
POWER CORD

FRONT VIEW

GENERAL NOTES:

- A. UNLESS OTHERWISE NOTED:
1. ALL DIMENSIONS ARE IN INCHES.
EXCEPT "[xxx]" = mm.
- B. APPROX WEIGHT: 800 - 900 LBS [363-408 KG].
- C. SEE ELECTRICAL SCHEMATIC FOR LOAD
CAPACITY (KW) RATINGS, VOLTAGE RATINGS,
AND BLOWER MOTOR RATING (H.P.)



TEXT			
LOAD BANK, 400 THRU 700KW			
DWG. NO.	REV.	SHEET	
LP400-700-OL	1	1 of 1	
DRAWN BY	CHK'D BY	DATE	SIZE
JJF	MMP	2/5/13	A

THIS DRAWING IS PROPERTY OF LOAD BANKS
DIRECT AND SHALL REMAIN SO WHILE IN USER'S
POSSESSION. THE TECHNOLOGY SHOWN HERE
IS STRICTLY PROPRIETARY AND IS NOT TO BE
DISCLOSED TO ANY 3RD PARTY WITHOUT LOAD
BANKS DIRECT PRIOR CONSENT.

REV 1: Added Hinged Control Cover (6/12/14)