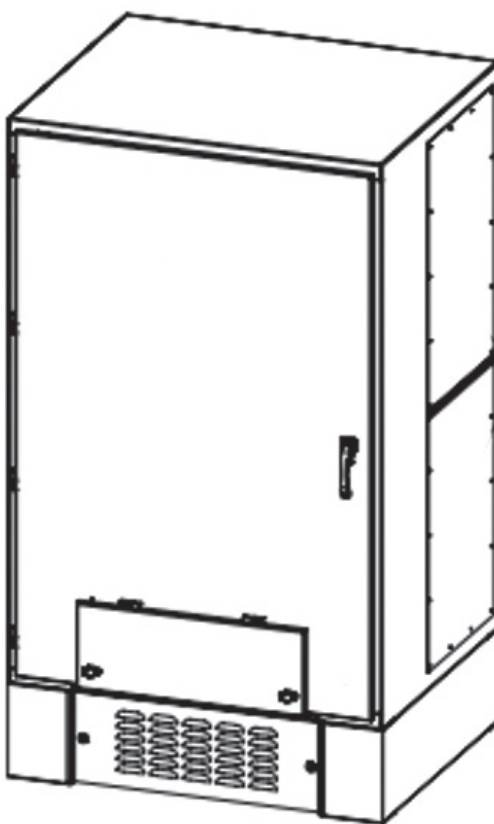


**DATA SHEET****Manual Transfer Switch Docking Station***(100 - 1200A)*

## PRODUCT INTRODUCTION

### Manual Transfer Switch Docking Station

(100 - 1200A)

When you require reliable power for critical operations, the Manual Transfer Switch (MTS) Docking Stations from Trystar can help you prevent downtime and maximize safety on the job. Since 1991, we've been providing trusted resources for your operational needs, and we continue to deliver powerful solutions for wide-ranging industries today.

The Trystar Manual Transfer Switch Docking Station is equipped to handle power applications whether temporary or permanent.

#### Key Features

---

##### **Rugged Construction:**

Aluminum NEMA 3R or 304/316 Stainless Steel NEMA 4X enclosure provides durability in harsh environments.

##### **Industry Standard Cam-lock Connections:**

Series 16 Camlock connectors with clear protective lids streamline setup while preventing unauthorized access and reducing wear, ensuring operational security.

##### **Phase Rotation Monitor:**

Standard feature prevents connection errors, ensuring optimal performance and reducing potential equipment damage.

##### **Tamper-Resistant:**

Patented tamper-resistant rake system to prevent and protect against unauthorized disconnection or cable theft.

##### **IBC Seismic Certified:**

Select enclosures available for seismically active areas.

##### **Wind Rated:**

Enclosures can be rated to handle the highest wind requirements (180MPH).

## PRODUCT SPECIFICATIONS

Electrical		
	Ampacity	100A - 1200A
	Voltage Options	Up to 600V (3- and 4-Pole)
	Frequency	50 / 60Hz
Environmental		
	Operating Temperature	32° to 104° F (0° to 40° C)
	Humidity Rating	5 to 95% relative humidity (non-condensing)
	Codes/Standards	ETL UL-1008, UL-50
Mechanical		
	Enclosure Types	NEMA 3R: Powder Coated Aluminum NEMA 4X: 304 or 316 Stainless Steel
	Bus Bar	Silver Plated Copper / Tin Plated Copper (wastewater facilities)
	*Enclosure Dimensions (H x W x D) Inches	Dual Padmount: 84" x 96.5" x 43" in. Deluxe Padmount: 90" x 78.5" x 43" in. Padmount Extra Depth: 84" x 48" x 61" in. Padmount: 84" x 48" x 43" in. Large Wall-mount: 60" x 48" x 19.5" in. Medium Wall-mount: 54" x 40" x 16.5" in. Small Wall-mount: 48" x 30" x 16.5" in.

\*Dimensions may vary due to applications or specifications

### Optional Accessories and Additions:

Long, Short, Instantaneous Ground Tripping (LSIG) / Energy Reduction Management System (ERMS) / 100% Rated Ground Conductors / ModBus TCP Connectivity / Temporary Input Mechanical Lug Connections / Two-wire Auto-start (5-way Bonding Posts) / Battery Charger Receptacles / Block Heater / Camlock Grounds / Terminal Wiring Block, SCADA / Kirk-key Door Interlock / Custom Lugs / Power Monitoring Device / Strip Heater and Thermostat / Surge Protection Devices / Load Dump (Shed Receptacle) / SER / Utility Light-Alarm/ Grace Light.

## ONE-LINE DRAWINGS

One-line drawings are provided as a reference guide to quickly see the intended use and configuration of our Trystar Manual Transfer Switches and Docking Stations. Additional one-lines do exist and Trystar's experienced engineers are ready to help tackle any custom job or requirement that may arise.

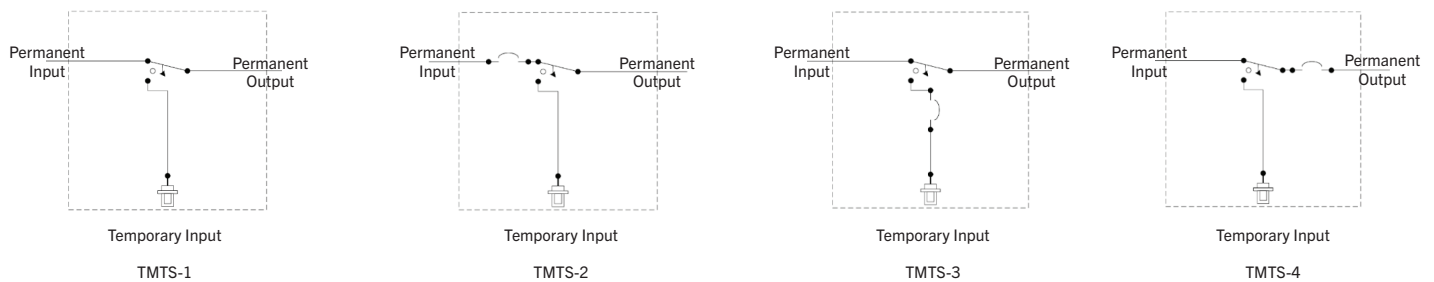
### Single Purpose:

**TMTS-1:** Our standard automatic transfer switch option. This includes the single transfer switch between a source that is permanently wired and a second source that is connected temporarily, often within the same enclosure.

**TMTS-2:** A modification on the standard where a single breaker is used on the permanent input.

**TMTS-3:** Another modification where a single breaker is used to provide over-current protection along the temporary input.

**TMTS-4:** A configuration where the breaker is placed on the output side of the transfer switch.

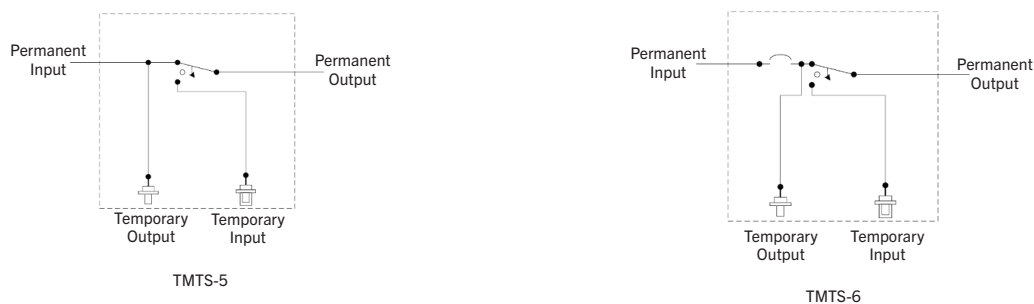


### Dual Purpose:

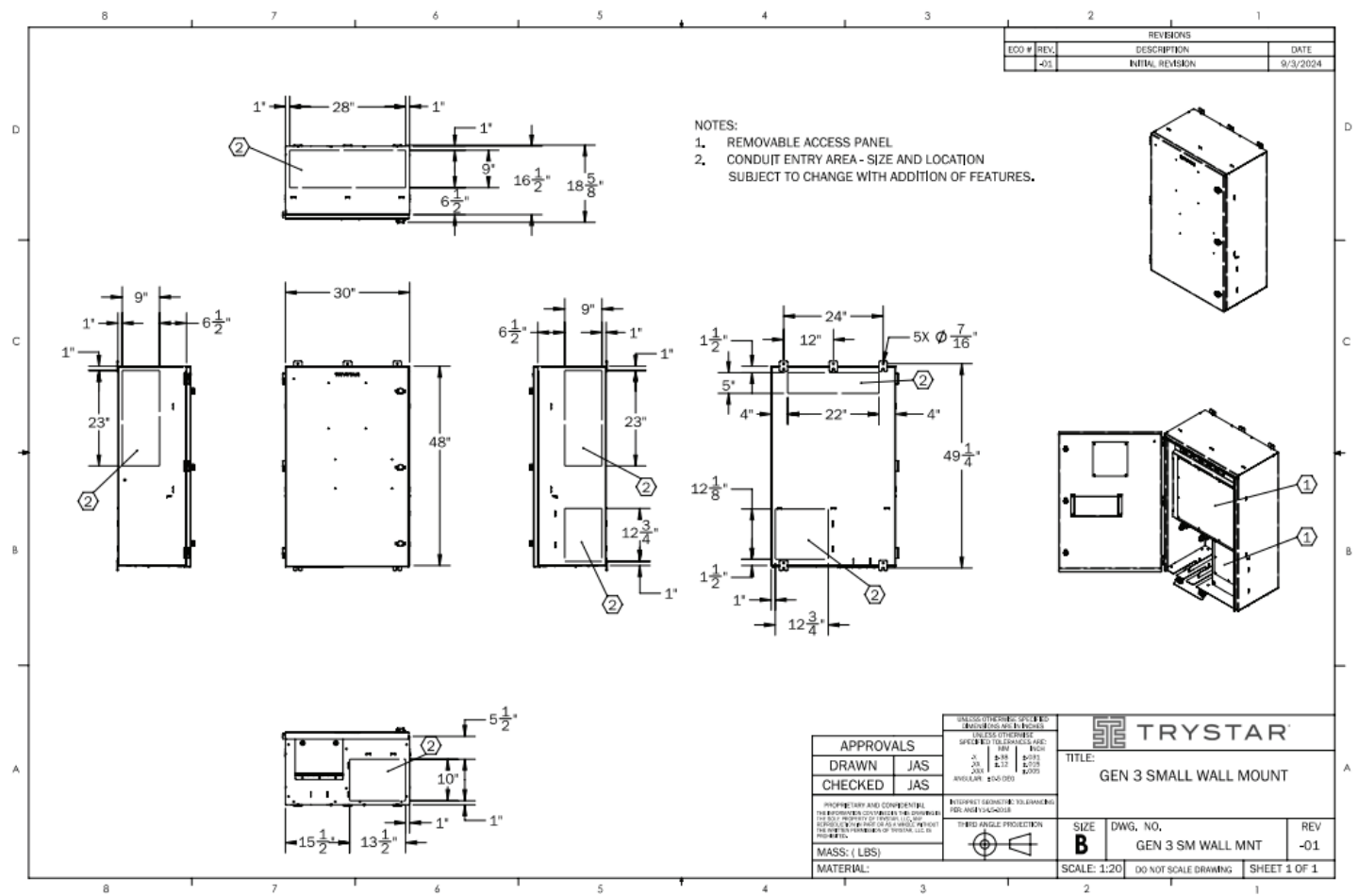
Dual Purpose docking stations are configurations where testing and commissioning of permanent inputs can be done by using temporary connections to an external load bank. These stations also include the manual transfer switch and temporary generator connections all still within the same enclosure.

**TMTS-5:** Allows for the system to be transferred to a temporary generator as an alternative to using the permanent generator. This configuration has the benefit of also being able to connect a load bank and test the permanent generator while back-up power is being supplied from the temporary generator.

**TMTS-6:** A variation on the TMTS – 5 where it includes a breaker upstream of the transfer switch and between the temporary output of load bank.

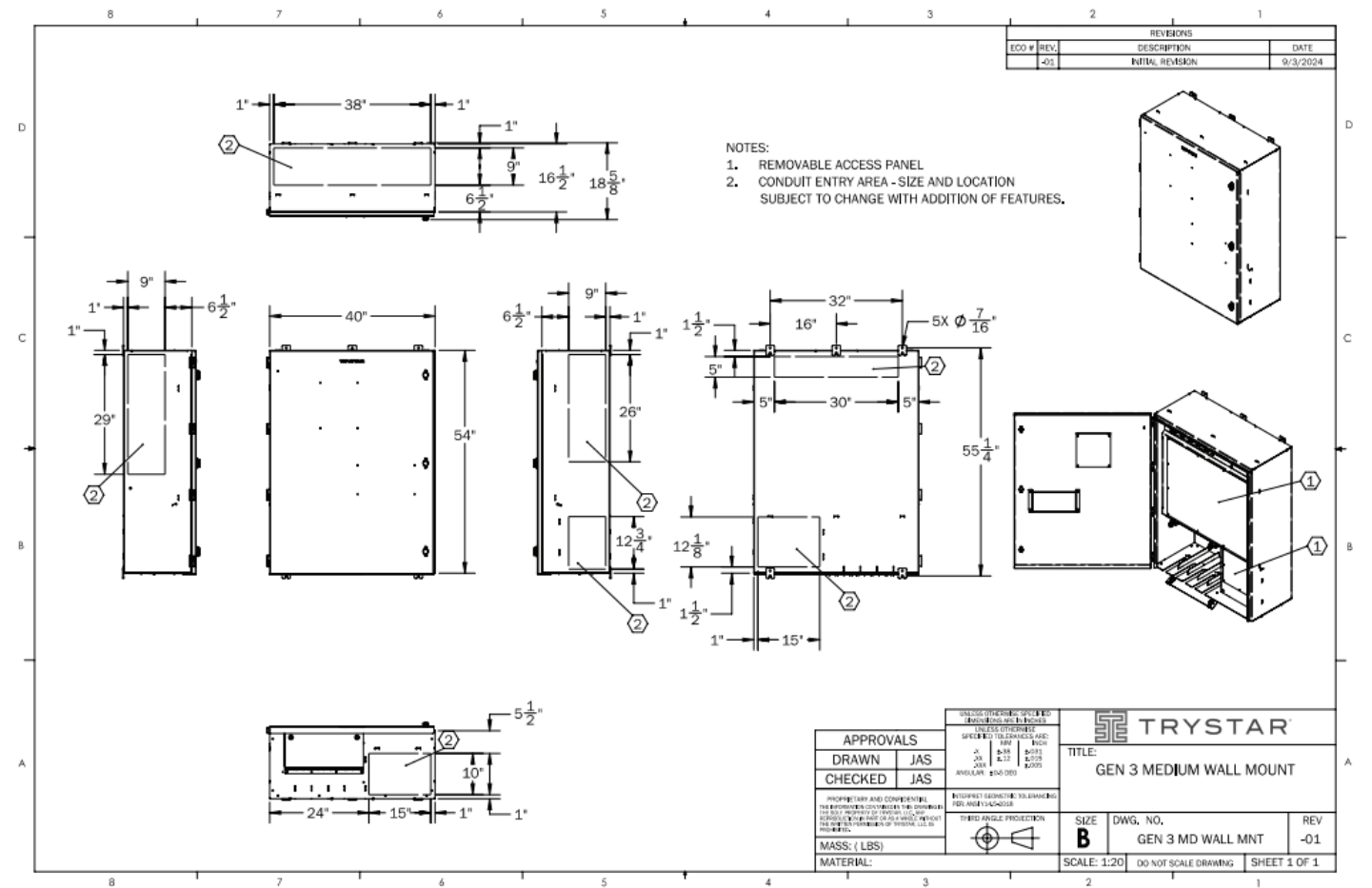


PRODUCT DRAWINGS

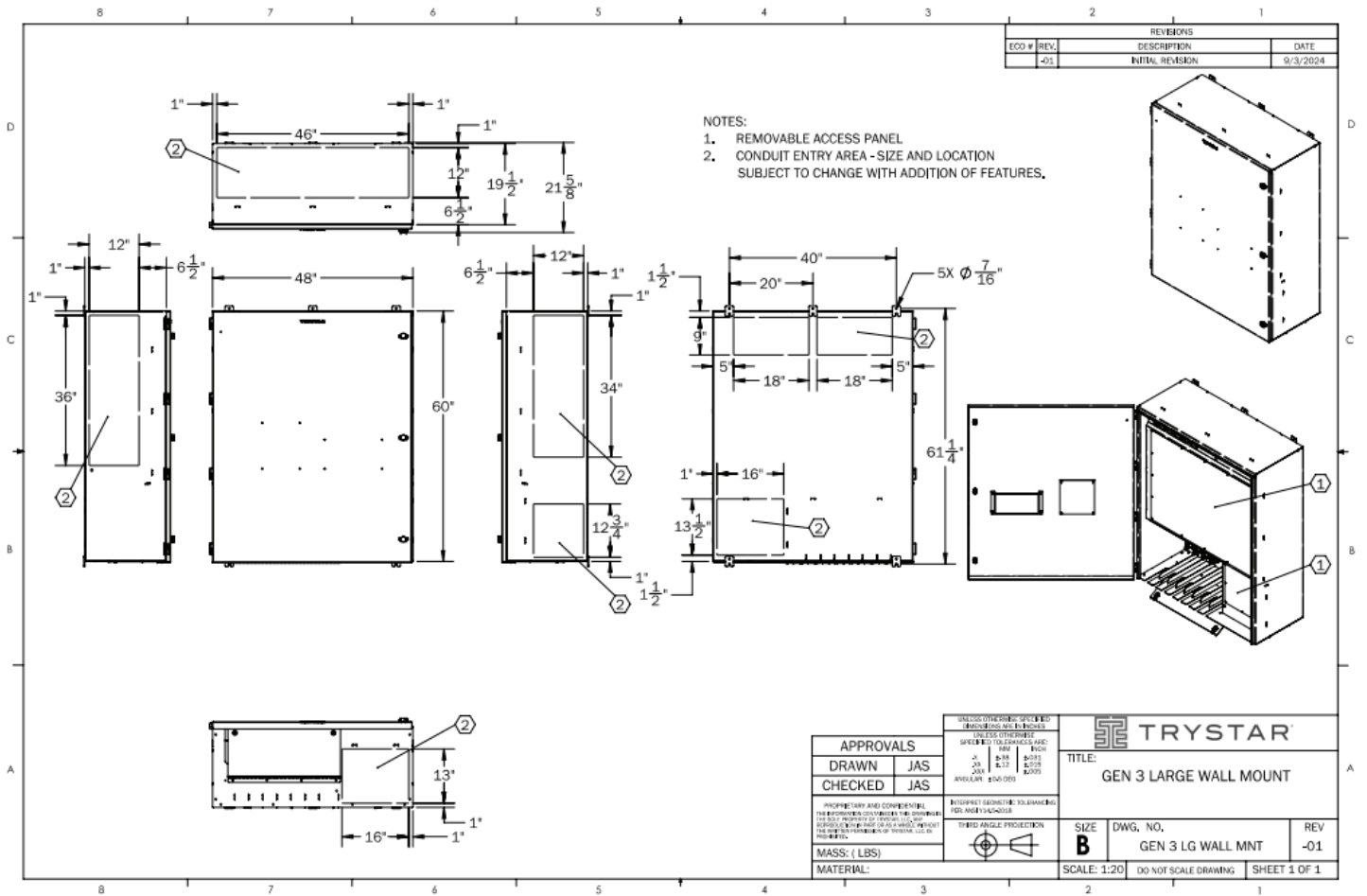


Small Wall Mount MTS Docking Station

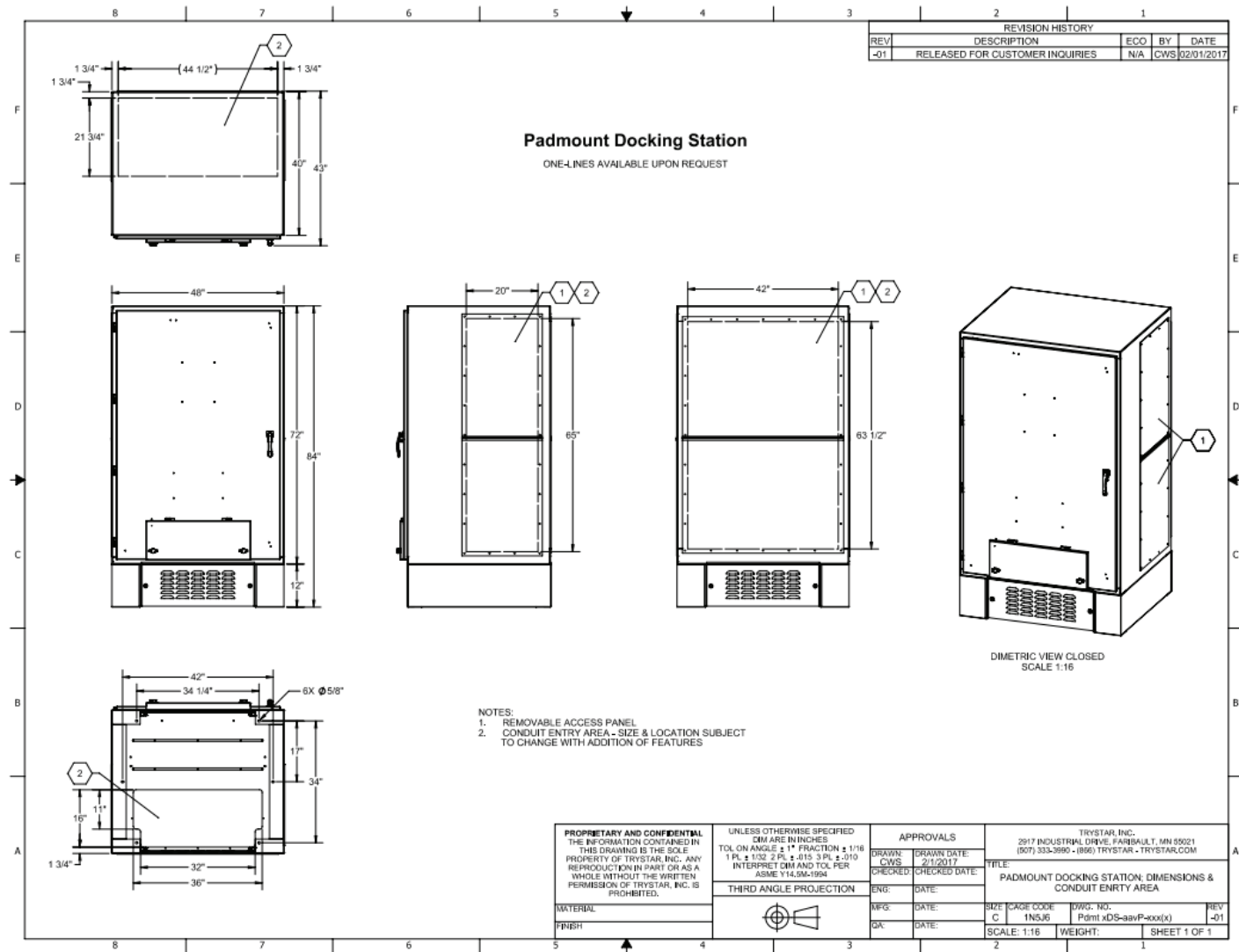
PRODUCT DRAWINGS



Medium Wall Mount MTS Docking Station



Large Wall Mount MTS Docking Station



Padmount MTS Docking Station

ORDERING INFORMATION

Catalog no.	Description
TMTS	Trystar Manual Transfer Switch

