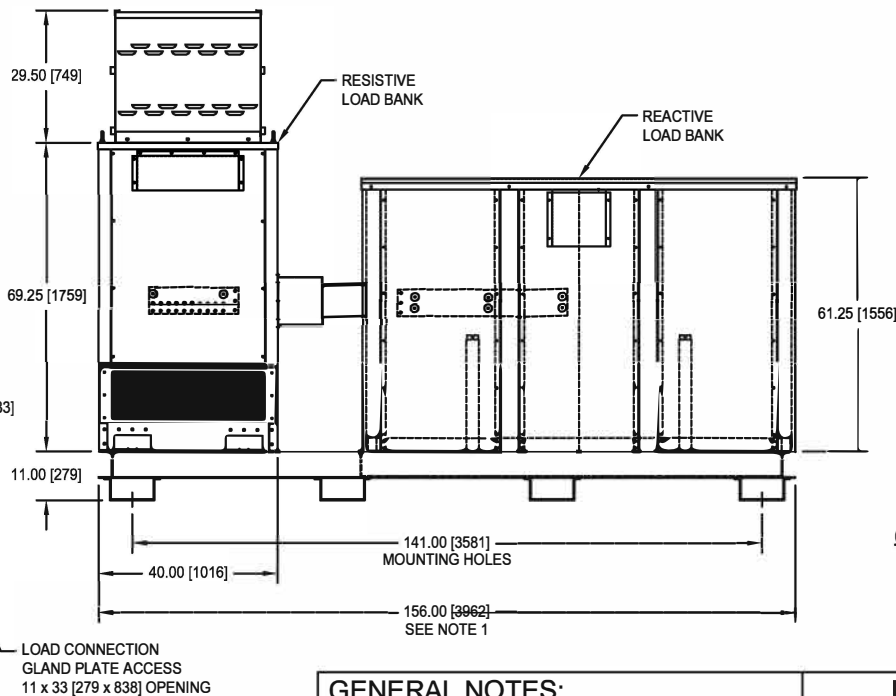
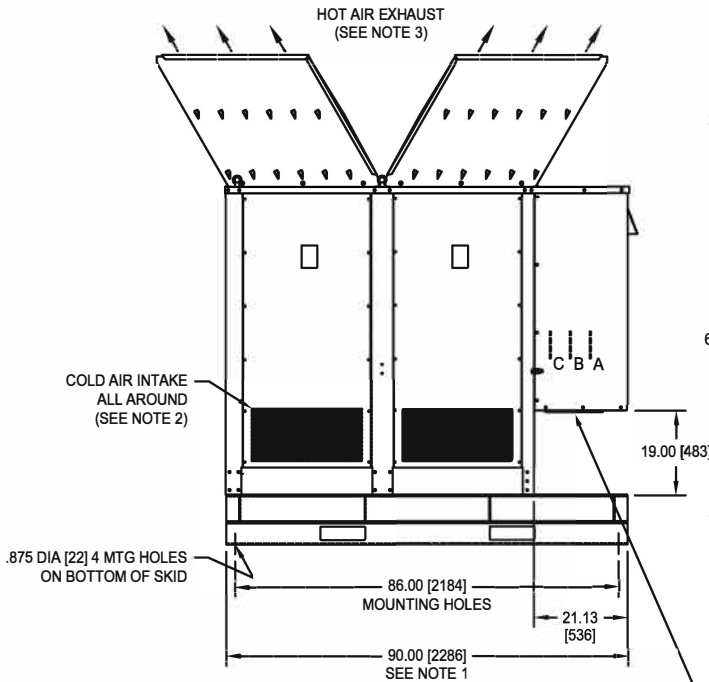
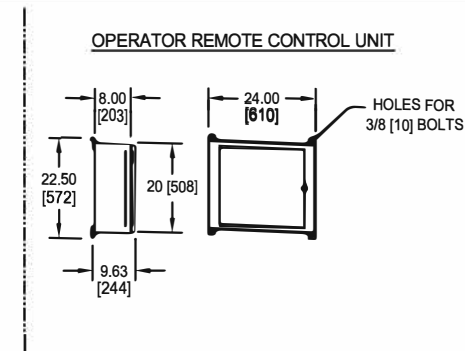
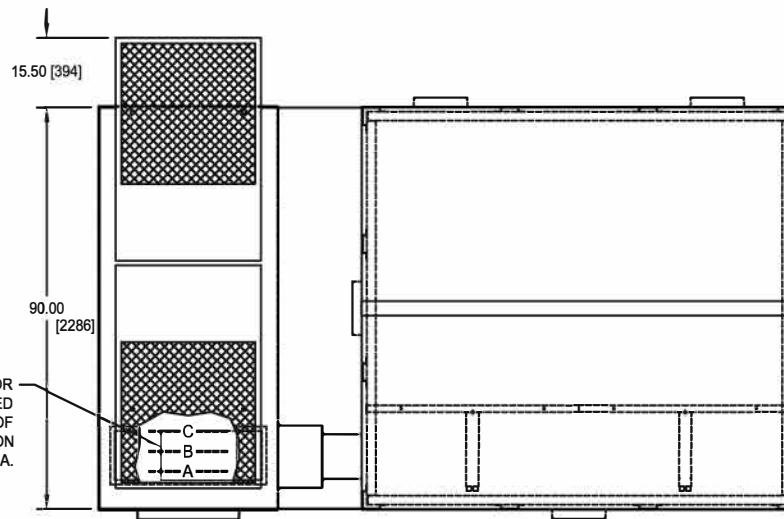


SEE DETAIL FOR RECOMMENDED BOTTOM ENTRY OF LOAD CONNECTION OPENING AREA.



**RECOMMENDED MINIMUM CLEARANCES**  
 (SEE O & M MANUAL FOR INSTALLATION DETAILS)

NOTE 1) 36" [914] ALL 4 SIDES FOR MAINTENANCE.  
 NOTE 2) 36"- 48" [914-1219] ALL 4 SIDES FOR AIR INTAKE.  
 NOTE 3) 12-14 FT [3658-4267] FOR TOP HOT AIR EXHAUST.  
 NOTE 4) LOAD BANK IS SUPPLIED WITH OUTDOOR WEATHERPROOF NEMA-3R-TYPE ENCLOSURE.

THIS DRAWING IS PROPERTY OF LOAD BANKS DIRECT AND SHALL REMAIN SO WHILE IN USER'S POSSESSION. THE TECHNOLOGY SHOWN HERE IS STRICTLY PROPRIETARY AND IS NOT TO BE DISCLOSED TO ANY 3RD PARTY WITHOUT LOAD BANKS DIRECT PRIOR CONSENT.

**GENERAL NOTES:**

- A. UNLESS OTHERWISE NOTED:
  1. ALL DIMENSIONS ARE IN INCHES. EXCEPT "[xxx]" = mm.
- B. APPROX WEIGHT: 8000 - 12000 LBS [3629-5443 KG]
- C. SEE ELECTRICAL SCHEMATIC FOR LOAD CAPACITY (KVA) RATINGS, VOLTAGE RATINGS, AND BLOWER MOTOR RATING (H.P.)



TEXT		1250 THRU 1875 KVA	
DWG. NO.	REV.	SHEET	
RL1250-1875-OL	-	1 of 1	
DRAWN BY	CHKD BY	DATE	SIZE
JJF	MMP	10/1/14	A