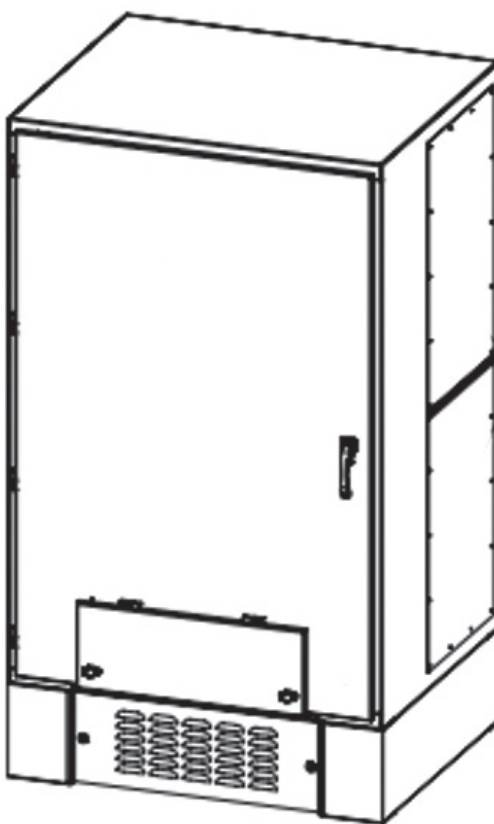


DATA SHEET**Single Purpose Docking Station***Load Banks (100 - 5000A)*

PRODUCT INTRODUCTION

Single Purpose Docking Station

Load Banks (100 - 5000A)

The Trystar generator docking station allows a user the temporary connection of a portable load bank to an existing service. This saves time and money when the permanent generator needs to be serviced or tested.

In most cases, this docking station sits right next to a permanent generator and the associated transfer switch. Trystar offers a solution that only has load bank connections in addition to offers with generator connections or both generator and load bank. We offer several enclosure sizes including wall-mount, flange-mount and padmount.

Key Features

Rugged Construction:

Aluminum NEMA 3R or 304/316 Stainless Steel NEMA 4X enclosure provides durability in harsh environments.

High Ampacity Range (100 - 5000 AMP):

Offers flexibility to support large scale power demands across various industries. 100-4000A with UL1008 Listing, 5000A with PE-listing.

Industry Standard Cam-lock Connections:

Series 16 Cam-Lock connectors with clear protective lids streamlines setup while preventing unauthorized access and reducing wear, ensuring operational security.

IBC Seismic Certified:

Select enclosures available for seismically active areas.

Wind Rated:

Enclosures can be rated to handle the highest wind requirements (180MPH).

PRODUCT SPECIFICATIONS

Electrical		
	Ampacity	100A - 5000A
	Voltage Options	Up to 600V
	Frequency	50 / 60Hz
Environmental		
	Operating Temperature	32° to 104° F (0° to 40° C)
	Humidity Rating	5 to 95% relative humidity (non-condensing)
	Codes/Standards	ETL UL-1008, UL-50
Mechanical		
	Enclosure Types	NEMA 3R: Powder Coated Aluminum NEMA 4X: 304 or 316 Stainless Steel
	Bus Bar	Silver Plated Copper / Tin Plated Copper (wastewater use)

PRODUCT SPECIFICATIONS (CONT.)

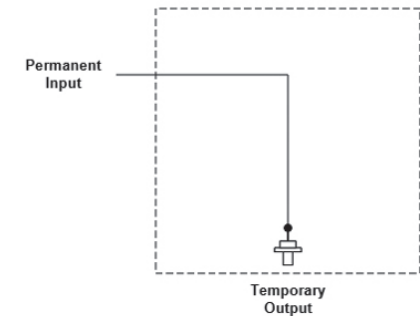
Mechanical (cont.)		
	*Enclosure Dimensions (H x W x D) Inches	Dual Padmount: 84" x 96.5" x 43" in. Deluxe Padmount: 90" x 78.5" x 43" in. Padmount Extra Depth: 84" x 48" x 61" in. Padmount: 84" x 48" x 43" in. Large Wall-mount: 60" x 48" x 19.5" in. Medium Wall-mount: 54" x 40" x 16.5" in. Small Wall-mount: 48" x 30" x 16.5" in. Large Flange-mount: 78"x 52"x 21.3" Medium Flange-mount: 70"x 44"x 18.3" Small Flange-mount: 64"x 34"x 18.3"

*Dimensions may vary due to applications or specifications

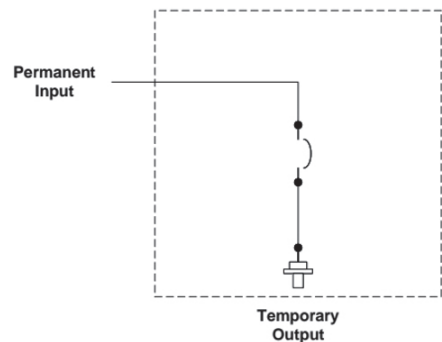
Optional Accessories and Additions:

Long, Short, Instantaneous Ground Tripping (LSIG) / Energy Reduction Management System (ERMS) / 100% Rated Ground Conductors / ModBus TCP Connectivity / Temporary Input Mechanical Lug Connections / Two-wire Auto-start (5-way Bonding Posts) / Battery Charger Receptacles / Block Heater / Camlock Grounds / Terminal Wiring Block, SCADA / Kirk-key Door Interlock / Custom Lugs / Power Monitoring Device / Strip Heater and Thermostat / Surge Protection Devices / Load Dump (Shed Receptacle) / SER / Utility Light-Alarm/ Grace Light.

ONE-LINE DRAWINGS



Generator Docking Station (GDS): Our simplest solution for connecting a temporary output is the GDS-4. Like all our docking stations, it provides a safe, legal, and quick means of connecting to a system with the typical aim of testing or providing power.



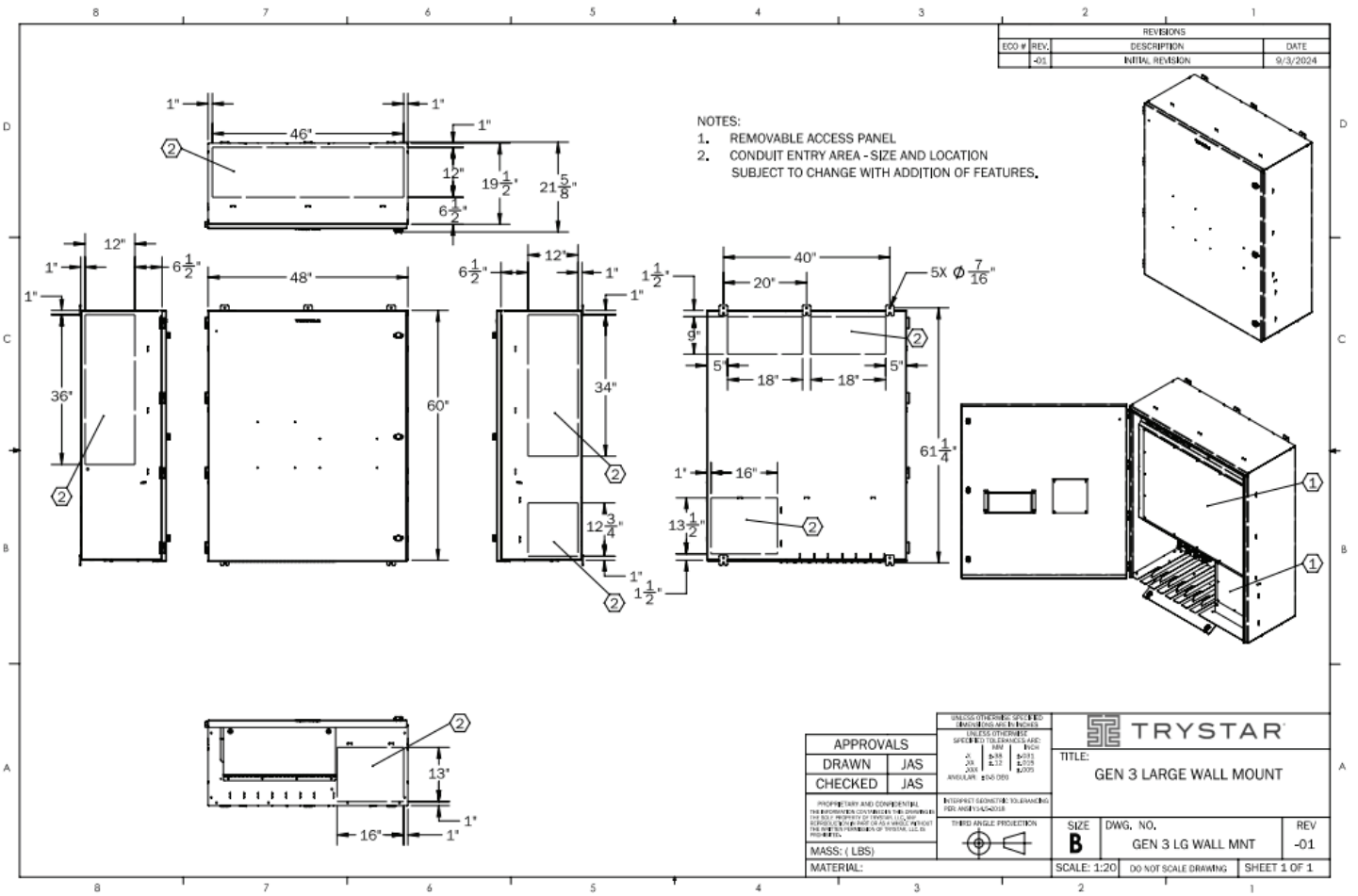
Single Breaker Docking Station (SBDS): SBDS-5 is our other docking station with only temporary output. By adding a breaker, we provide a means of protection by limiting the current to a controlled value.

[illegible]

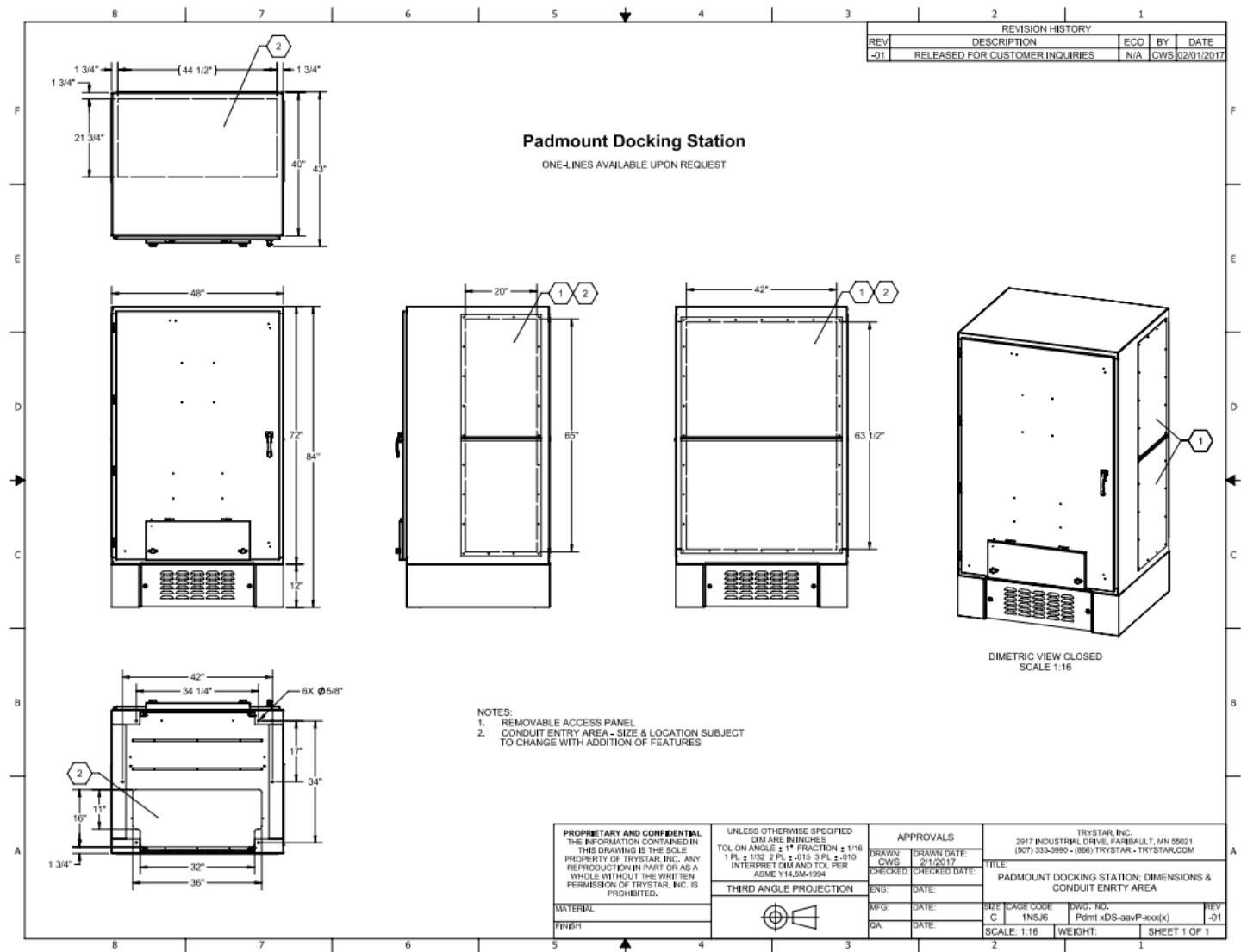
Small Wall Mount Single Purpose Docking Station



PRODUCT DRAWINGS



Large Wall Mount Single Purpose Docking Station



Padmount Single Purpose Docking Station

ORDERING INFORMATION

Catalog no.	Description
GDS	Non-Breaker Docking Stations, Dual Purpose
<u>X</u> BDS	<u>S</u> B = Single / <u>D</u> B = Dual / <u>T</u> B = Triple Breaker Docking Station, Dual Purpose

